



## addEASE® BC2000

### Binary Connector with 17 Ga. Needle

Device for Exclusive Use with the PAB® IV Container

B. Braun now offers a modified Binary Connector for exclusive use with B. Braun PAB Partial Additive Bag.

This design with a steel spike allows assembly to the PAB with less connection force. Additional flanges inside the addEASE assembly allow faster and more accurate attachment to the PAB bag. The cap on this device is clear to allow faster product identification in the busy pharmacy environment.



#### Binary Connector

*Components do not contain DEHP or natural rubber/latex*

#### BC2000

Binary Connector (20mm) for use with PAB Partial Additive Bag. Clear cap. 200 per case.

For more information about this or any of B. Braun's pharmacy admixture products, Call Customer Support at **1-800-227-2862**.

**B | BRAUN**  
SHARING EXPERTISE

[www.bbraunusa.com](http://www.bbraunusa.com)

# Binary Connector with 17 Ga. Needle for Use with PAB® Containers

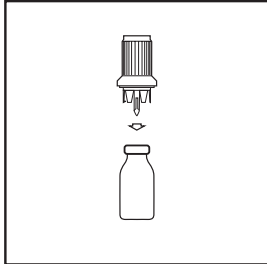
## Directions for Use

Use Aseptic Technique.

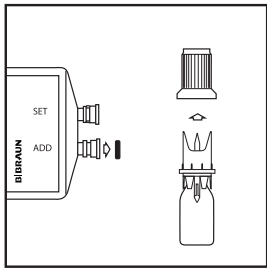
Follow drug manufacturer's Package Insert and hospital protocol for preparation of additives.

For use only with PAB® IV Containers

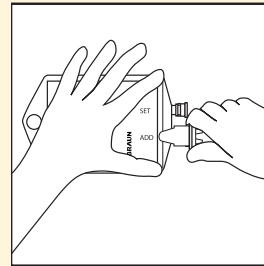
## Assembly Instructions



- 1 Remove cap from medication vial. Swab medication vial closure site. While holding the addEASE® firmly in both hands, snap/twist open the two halves and pull apart. The smaller cover will disconnect first, exposing the vial spike. Place medication vial upright on flat surface. Center addEASE spike inside the target of the medication vial and push straight down until addEASE latches firmly onto vial.



- 2 Remove MED ADD port cap from PAB container. Swab container MED ADD port. Pull remaining cover straight off addEASE to remove.



- 3 Hold PAB container as shown with thumb and index finger, without squeezing.

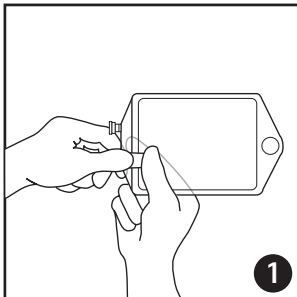
Center addEASE over MED ADD port so flanges slide over container.

**IMPORTANT:**  
GENTLY PUSH addEASE straight onto container MED ADD port **WITH A CONTINUOUS MOTION** until addEASE securely latches in to place. **If not connected gently with a continuous motion, particulate matter may be generated.**

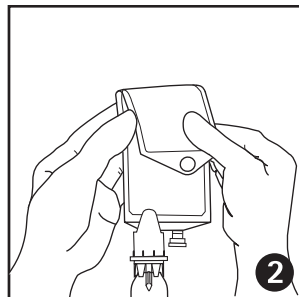
### NOTES:

- Do not squeeze or flex container until activation is desired.
- Do not refrigerate assembled system prior to activation.

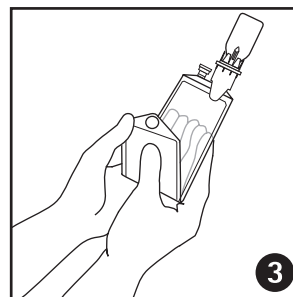
## Activation and Administration Set Instructions



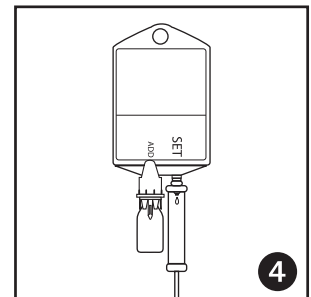
At time of use, check to ensure addEASE is firmly **latched to container**. **If not firmly latched, discard assembly.** Prior to reconstitution, inspect contents of drug vial for presence of liquid. If liquid is present in powdered drug, discard assembly.



To activate, position vial below container. For vials containing liquid drug, position vial above bag to activate. Fold container 1/3 from top and squeeze firmly to force plug from spike into vial. To transfer diluent to vial, fold container 1/3 from top and squeeze firmly. Repeat until vial is approximately half full. Do not overfill vial with liquid. Thoroughly mix to dissolve, following drug manufacturer's Package Insert.



With vial positioned above container as shown, fold container 1/3 from top and squeeze firmly to transfer solution from vial to container. If necessary, repeat **Steps 2 and 3**. **CAUTION: Inspect solution and discard assembled system if cloudiness, haze or particulate matter is found.** Consult medication vial Directions for Use for additional admixing instructions.



After reconstitution, attach the administration set to container set port. Refer to IV set Directions for Use. Hang container. To prevent fluid from reentering vial, avoid squeezing or flexing container.

**CAUTION:** Do not disconnect medication vial from container. After use, dispose of assembled system per institutional protocol.

**B | BRAUN**  
SHARING EXPERTISE

[www.bbraunusa.com](http://www.bbraunusa.com)

For one use only. Pictorials for reference only.  
Compatible with most 20 mm medication vials.

Rx Only. ©2011 B. Braun Medical Inc., Bethlehem, PA. All Rights Reserved.

IVX40-A 5/11 JH